

A100 SERIES TIME INITIATED STAGER CONTROLLER PART NUMBER MATRIX

FILL IN PROPER DESIGNATIONS TO DETERMINE PRODUCT NUMBER:

A - - - - -

<u>TIMER</u>	<u>MECHANICAL TIMER SERIES</u>
1	= Day Timer (Autotrol 440 Series)

<u>STAGER</u>	<u>ROTARY PILOT STAGER SERIES</u>
00	= Timer Only (No Stager)
48	= 6-Port (Brass)
51	= 8-Port (Brass)
58	= 16-Port (PVC)

<u>PROGRAM</u>	<u>STAGER PROGRAM</u>	NOTE: See following pages for Program details.
* 00 to 99	= Standard	NOTE: A100 Controllers are NOT valid with the following Stager Programs: 48-03, 48-04, 48-12, 48-TA, 51-12, 58-00, 58-01, 58-02, 58-10, 58-TB
** SS	= Special Per Drawing Indicated	
*** TA	= Twin Alternating Softener with Service Lights (For 58 Stagers Only)	
XX	= Timer Only (No Stager)	
* 2-character designation from standard stager drawing.		
** Special drawing number placed in last 5 digits of product number.		
*** Makes indicated controller/stager twin alternating.		

<u>ENCLOSURE</u>	<u>NEMA RATING OF PANEL & ENCLOSURE</u>
1	= NEMA 1 Standard Panel & Enclosure
4	= NEMA 4 Standard Panel & Enclosure
F	= NEMA 4X Fiberglass Panel & Enclosure

<u>ELECTRICAL</u>	<u>POWER REQUIRED TO OPERATE DEVICE</u> (Field Configurable)
1	= 115V/60Hz
2	= 230V/50Hz
4	= 230V/60Hz
5	= 24V/50Hz (NOT for 58 Stagers)

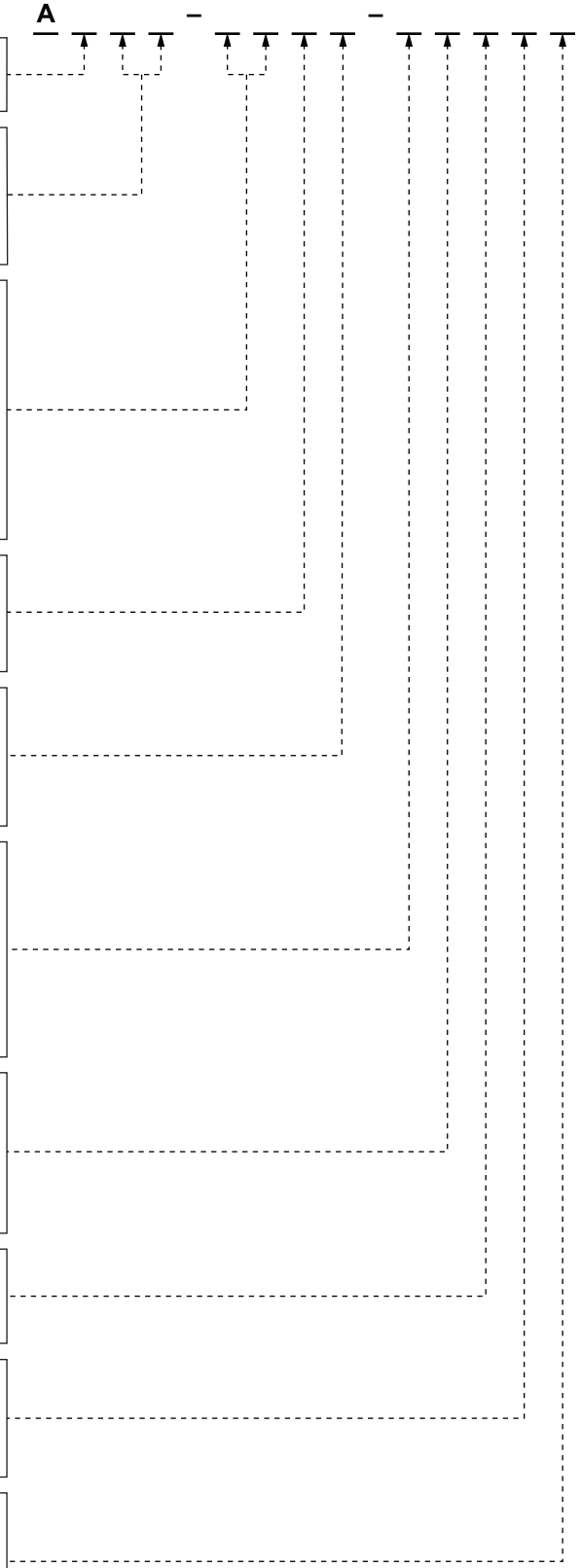
<u>1st AUX SWITCH</u>	<u>FIRST EXTRA SWITCH ON ROTARY PILOT STAGER</u> (Unless Special Drawing Number Is Assigned)
0	= None
* A to R	= Cam Position Switch Active (I & O not used)
S	= Service Return (Homing)
W	= Status Lights Cam (For 58-TA Stagers Only)
Z	= Blank Cam (No Notches)
* Use special drawing number if active in more than 1 position.	

<u>2nd AUX SWITCH</u>	<u>SECOND EXTRA SWITCH ON ROTARY PILOT STAGER</u> (Option "S" Standard on 58-TA Program Only)
0	= NONE
* A to R	= Cam Position Switch Active (I & O not used)
S	= Service Return (Homing) (For 58-TA Stagers Only)
Z	= Blank Cam (No Notches)

<u>PRESSURE</u>	<u>PROGRAM OF STAGER</u>
0	= Standard (Vent to Open -or- Not Applicable for "Timer Only")
1	= Inverted (Pressure to Open)

<u>REGEN FREQUENCY</u>	<u>MAXIMUM DAYS BETWEEN REGENERATION</u>
6	= 6 Day (A100 Day Timer Only)
7	= 7 Day (A100 Day Timer Only)

<u>STAGER REVISION</u>	<u>(Unless Special Drawing Number Is Assigned)</u>
0	= Not Applicable (Devices without Stagers)
B	= 48 & 51 Series Stagers Included
C	= 58 Series Stagers Included



SERIES 48 STANDARD STAGER PROGRAMS

STAGER PROGRAM	# POS.		PORTS VENTED IN POSITION						REF. DWG NO.	FUNCTION
			0	1	2	3	4	5		
			A	B	C	D	E	F		
00	4	POSITION	SVC	—	BW	—	BSR	FR	4800PRGM	4 POS. SOFTENER
		PORTS VENTED	1, 2	—	3, 4	—	5, 6	1, 6		
01	3	POSITION	SVC	—	BW	—	—	FR	4801PRGM	3 POS. FILTER
		PORTS VENTED	1, 2	—	3, 4	—	—	1, 6		
03*	4	POSITION	SVC	—	BW	—	BSR	FR	4803PRGM	4 POS. SOFTENER (BUTTERFLY CAM)
		PORTS VENTED	1, 2	—	3, 4	—	5, 6	1, 6		
04*	2	POSITION	SVC	—	BW	—	—	—	4804PRGM	2 POS. FILTER
		PORTS VENTED	1, 2	—	3, 4	—	—	—		
12*	4	POSITION	SVC	—	BW <i>-or-</i> ASC	BSR <i>-or-</i> BW	—	FR	4812FPRGM 4812SPRGM	4 POS. FILTER W/ AIR SCOUR or 4 POS. UPFLOW SOFTENER
		PORTS VENTED	1, 2	—	3, 4	4, 5	—	1, 6		
83	4	POSITION	BW2	BW3	—	—	SVC	BW1	4883PRGM	3 TANK SEQUENTIAL FILTER
		PORTS VENTED	2	3	—	—	6	1		
84	5	POSITION	BW2	BW3	BW4	—	SVC	BW1	4884PRGM	4 TANK SEQUENTIAL FILTER
		PORTS VENTED	2	3	4	—	6	1		
85	6	POSITION	BW2	BW3	BW4	BW5	SVC	BW1	4885PRGM	5 TANK SEQUENTIAL FILTER
		PORTS VENTED	2	3	4	5	6	1		
TA*	2	POSITION	SVCA	—	SVCB	—	—	—	48TAPRGM	2 TANK ALTERNATOR
		PORTS VENTED	1	—	2	—	—	—		

* STAGER PROGRAM FOR USE WITH E SERIES (AQUAMATIC 962) CONTROLLER ONLY.

ASC = AIR SCOUR

SVC = SERVICE

BSR = BRINE / SLOW RINSE

SVCA = SERVICE UNIT A

BW = BACKWASH

SVCB = SERVICE UNIT B

FR = FAST RINSE

SERIES 51 STANDARD STAGER PROGRAMS

STAGER PROGRAM	# POS.		PORTS VENTED IN POSITION								REF. DWG NO.	FUNCTION
			0	1	2	3	4	5	6	7		
			A	B	C	D	E	F	G	H		
06	6	POSITION	SVC	—	BW	—	BRD	SR	FR	REF	5106PRGM	6 POSITION SOFTENER (TIMED DRAW & REFILL)
		PORTS VENTED	1, 2	—	4	—	5, 6, 7	6, 7	1, 7	1, 2, 8		
07	5	POSITION	SVC	—	BW	—	BRD	SR	FR	—	5107PRGM	5 POSITION SOFTENER (TIMED DRAW)
		PORTS VENTED	1, 2	—	4	—	5, 6, 7	6, 7	1, 7	—		
09	5	POSITION	SVC	—	—	BW	BSR	—	FR	REF	5109PRGM	5 POSITION SOFTENER (TIMED REFILL)
		PORTS VENTED	1, 3	—	—	4	5, 7	—	1, 7	1, 8		
10	5	POSITION	SVC	—	BW	FRA	—	—	BW2	FRB	5110PRGM	2 TANK SEQUENTIAL FILTER (BACKWASH & FAST RINSE)
		PORTS VENTED	1, 2, 5, 6	—	5, 6, 7	1, 5, 6, 8	—	—	1, 2, 3	1, 2, 4, 5		
11	7	POSITION	SVC	—	DRD	—	ASC	BW	—	FR	5111PRGM	FILTER WITH AIR SCOUR
		PORTS VENTED	2, 3	—	1, 4	—	4, 6, 7	4, 7, 8	—	1, 2		
12*	6	POSITION	SVC	BW	—	BRD	DISP	RECL	FR	—	5112PRGM	BRINE RECYCLE SOFTENER
		PORTS VENTED	1, 8	2	—	4, 5	4, 5	5, 6	4, 8	—		
86	7	POSITION	SVC	BW1	BW2	BW3	BW4	BW5	BW6	—	5186PRGM	6 TANK SEQUENTIAL FILTER
		PORTS VENTED	8	1	2	3	4	5	6	—		
87	8	POSITION	BW1	BW2	BW3	BW4	BW5	BW6	BW7	SVC	5187PRGM	7 TANK SEQUENTIAL FILTER
		PORTS VENTED	1	2	3	4	5	6	7	8		

* STAGER PROGRAM FOR USE WITH E SERIES (AQUAMATIC 962) CONTROLLER ONLY.

ASC = AIR SCOUR

SVC = SERVICE

BSR = BRINE / SLOW RINSE

SVCA = SERVICE UNIT A

BW = BACKWASH

SVCB = SERVICE UNIT B

FR = FAST RINSE

SERIES 58 STANDARD STAGER PROGRAMS

STAGER PROGRAM	# POS.		PORTS VENTED IN POSITION															REF. DWG NO.	FUNCTION	
			0	1	2	3	4	5	6	7	8	9	10	11	12	13	14			15
			A	B	C	D	E	F	G	H	J	K	L	M	N	P	Q	R		
00*	9	POSITION	SVC	—	—	CBW	—	—	INJ	CSR	CFR	ABW	—	—	ADR	ASR	AFR	—	5800 PRGM	2 BED DI UNIT
		PORTS VENTED	1, 15, 16	—	—	2, 3	—	—	5, 6, 7	6, 7	1, 7	1, 10	—	—	1, 11, 12, 13	1, 12, 13	1, 13, 15	—		
01*	5	POSITION	SVC	—	—	—	—	—	—	—	—	—	DRD	ASC	—	BW	—	FR	5801 PRGM	5 POS. FILTER, DBL. ACTING VALVES
		PORTS VENTED	3, 4, 5, 6, 7, 8, 9, 10	—	—	—	—	—	—	—	—	—	—	7, 8, 9, 10, 11, 12, 13, 14	5, 8, 9, 10, 11, 12, 14, 15	—	1, 5, 6, 7, 10, 11, 12, 16	—		
02*	9	POSITION	SVC	—	—	CBW	—	—	CDR	CSR	CFR	ABW	—	—	ADR	ASR	AFR	—	5802 PRGM	2 BED DI UNIT, OUTLET VALVE ON CATION UNIT
		PORTS VENTED	1, 2, 3, 16	—	—	4	—	—	6, 7, 8	7, 8	1, 8	1, 3, 11	—	—	1, 3, 12, 13, 14	1, 3, 13, 14	1, 3, 14, 16	—		
03	7	POSITION	SVC	—	BW1	FR1	—	—	BW2	FR2	—	—	BW3	FR3	—	—	—	—	5803 PRGM	3 TANK SEQ. FILTER, BW & FAST RINSE
		PORTS VENTED	2, 4, 6, 7, 9, 11	—	1, 6, 7, 9, 11	2, 6, 7, 9, 11, 12	—	—	2, 4, 5, 9, 11	2, 4, 6, 9, 11, 16	—	—	2, 3, 4, 6, 7	2, 4, 6, 7, 9, 10	—	—	—	—		
04	9	POSITION	SVC	—	BW1	FR1	—	—	BW2	FR2	—	—	BW3	FR3	—	—	BW4	FR4	5804 PRGM	4 TANK SEQ. FILTER, BW & FAST RINSE
		PORTS VENTED	2, 4, 6, 7, 9, 11, 14, 15	—	1, 6, 7, 9, 11, 14, 15	2, 6, 7, 9, 11, 12, 14, 15	—	—	2, 4, 5, 9, 11, 14, 15	2, 4, 6, 9, 11, 14, 15, 16	—	—	2, 3, 4, 6, 7, 14, 15	2, 4, 6, 7, 9, 10, 14, 15	—	—	2, 4, 6, 7, 9, 11, 13	2, 4, 6, 7, 8, 9, 11, 14		
07	10	POSITION	SVC	—	BW	—	INJ	DISP	FR	DRN	—	AM	AMD	—	REF	—	—	FNR	5807 PRGM	MIXED BED DI UNIT, SIMULTANEOUS REGEN
		PORTS VENTED	11, 12	—	1, 13	—	1, 3, 15, 16	1, 3, 16	1, 3, 11	3, 7	—	5, 7	3, 5, 7	—	7, 11	—	—	10, 11		
10*	11	POSITION	SVC	—	BW	SET	—	CDR	CSR	—	ADR	ASR	AFR	—	DRD	AM	—	FNR	5810 PRGM	MIXED BED DI UNIT
		PORTS VENTED	15, 16	—	1	(NONE)	—	4, 5, 9	5, 9	—	7, 8, 9	8, 9	9, 10	—	9, 12	12, 13	—	14, 15		
TA	8	POSITION	SVCA	—	—	BWA	BSRA	—	—	FRA	SBA	—	—	—	—	BWB	BSRB	FRB	58TA PRGM	2 UNIT ALTERNATING SOFTENER
		PORTS VENTED	1, 2, 8, 16	—	—	6, 8, 11	5, 7, 8, 11	—	—	7, 8, 11, 16	8, 11, 16	—	—	—	—	2, 13, 16	1, 2, 15, 16	2, 8, 15, 16		
TB*	10	POSITION	SVCA	—	—	BWA	—	BRD	SR	FRA	SBA	—	—	BWB	—	BRD	SR	FRA	58TB PRGM	2 TANK ALTERNATOR WITH TIMED BRINE
		PORTS VENTED	6, 14, 16	—	—	1, 2, 6, 8	—	4, 5, 6, 8	4, 5, 6, 8	5, 6, 8, 14	6, 8, 14	—	—	9, 10, 14, 16	—	12, 13, 14, 16	12, 13, 14, 16	6, 13, 14, 16		

* STAGER PROGRAM FOR USE WITH E SERIES (AQUAMATIC 962) CONTROLLER ONLY.

ABW = ANION BACKWASH
 ADR = ANION DRAW
 AM = AIR MIX
 AMD = AIR MIX & DRAIN DOWN
 ASC = AIR SCOUR
 ASR = ANION SLOW RINSE
 AFR = ANION FAST RINSE
 BW = BACKWASH
 BWA = BACKWASH UNIT A
 BWB = BACKWASH UNIT B

BRD = BRINE DRAW
 BSR = BRINE / SLOW RINSE
 BSRA = BRINE / SLOW RINSE UNIT A
 BSRB = BRINE / SLOW RINSE UNIT B
 CBW = CATION BACKWASH
 CDR = CATION DRAW
 CFR = CATION FAST RINSE
 CSR = CATION SLOW RINSE
 DRD = DRAIN DOWN
 DISP = DISPLACE

FR = FAST RINSE
 FRA = FAST RINSE UNIT A
 FRB = FAST RINSE UNIT B
 FNR = FINAL RINSE
 INJ = INJECT
 RECL = RECLAIM
 REF = REFILL
 SBA = STANDBY UNIT A
 SBB = STANDBY UNIT B
 SET = SETTLE

SR = SLOW RINSE
 SVC = SERVICE
 SVCA = SERVICE UNIT A
 SVCB = SERVICE UNIT B