



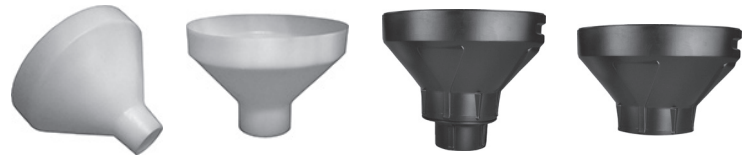
## MEDIA LOADING FUNNELS

### Media Loading Funnels

SWT's Media Loading Funnels are simply designed to efficiently load underbedding and media into residential, commercial, and industrial tanks with 2.5, 4, 4.5, or 6 inch openings.

### Directions for Use:

1. Place the vessel in the desired location, then level and stabilize it.
2. Cover the top of the riser tube (a PVC plug or cap is recommended) before loading the media. This is necessary to keep the media from going down the riser tube and internally restricting the bottom distributor. Make sure that the riser tube is centered in the vessel before loading the media.
3. Fill the vessel 1/3 full of water. This will reduce the chance of damage to the distribution system when loading the vessel with media.
4. Using a funnel, slowly add the underbedding (gravel, anthracite, garnet, etc.) to the vessel.
5. Using a funnel, slowly add the resin or filtration media to the vessel.
6. After loading the required amount of media, remove the funnel, clean the tank threads, and remove the cover from the riser tube before mounting the control valve assembly.
7. Mount the control valve assembly to the vessel.



**SM-F250**

Resin Funnel  
for 2.5" Tank  
Opening  
(100% PE)

**SM-F400**

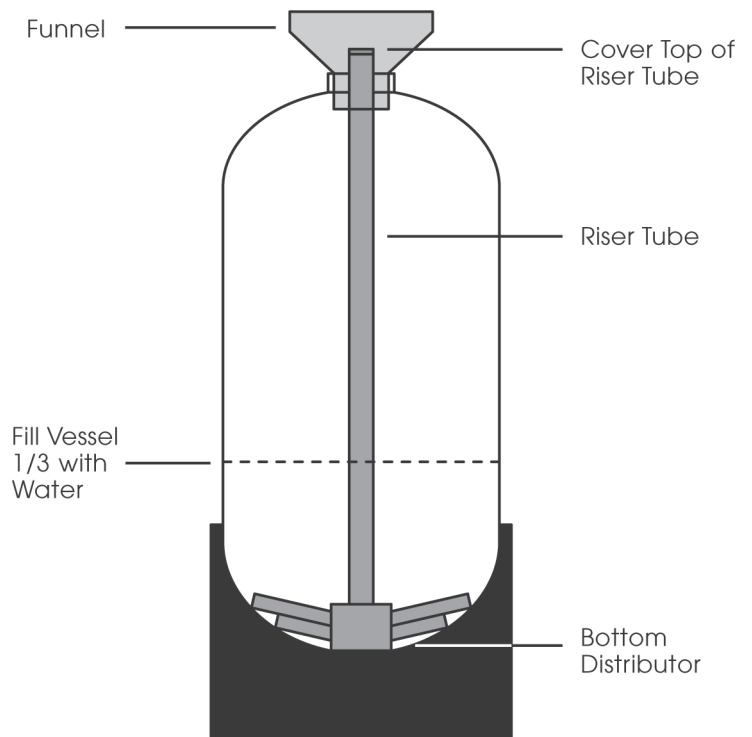
Resin Funnel  
for 4" to 6" Tank  
Opening  
(100% PE)

**SM-F400-BLACK**

Resin Funnel  
for 4" to 6" Tank  
Opening  
(100% PE)

**SM-F600**

Resin Funnel  
for 6" Tank  
Opening  
(100% PE)



Part Number	Wall Thickness	OD Top	OD Bottom	Height Overall	Height Neck
SM-F250	0.20"	9.5"	2.375"	7.5"	2"
SM-F400	0.20"	10.25"	3.75"	7.25"	2"
SM-F400-BLACK	0.14"	8.5 x 11.5"	3.75"	9.25"	2"
SM-F600	0.14"	8.5 x 11.5"	5.75"	7.25"	2"