

# ULTRAVIOLET SYSTEMS

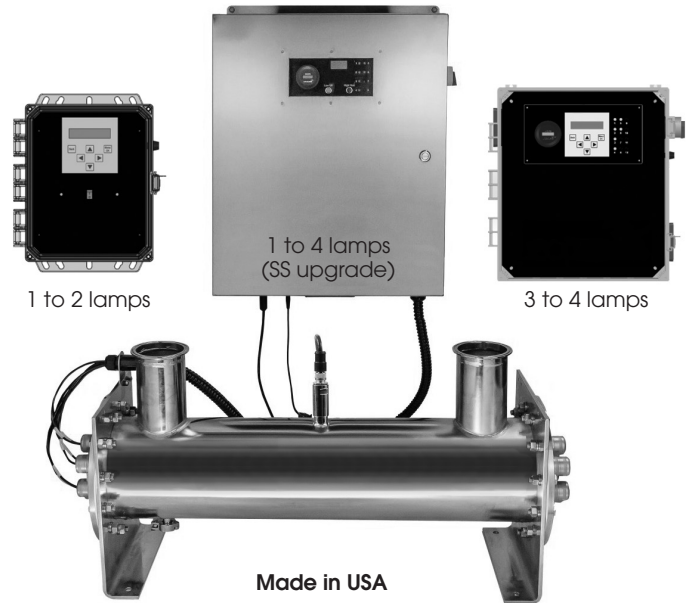


## UVL SERIES ULTRAVIOLET SYSTEMS COMMERCIAL / INDUSTRIAL

SWT's UVL Series Ultraviolet Systems provide proven and guaranteed performance in ultraviolet water treatment for a wide range of commercial and industrial applications. These systems are specifically intended for applications requiring low flows to high flows for disinfection, ozone destruction, and TOC reduction. Each system is engineered to provide optimized flow and retention time to reduce bacteria by up to 99.9%. With dosage levels of 30 mJ/cm<sup>2</sup> or higher at rated flow, these units assure effective UV treatment.

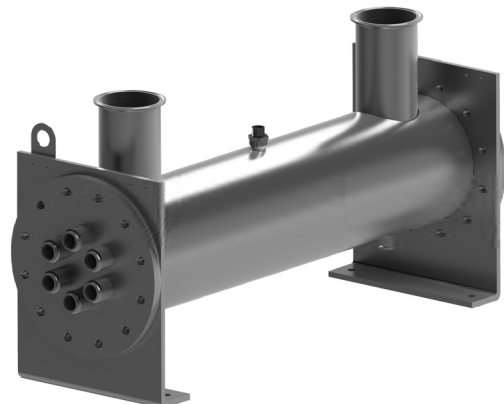
### Features

- Disinfection, ozone destruction, or TOC reduction
- Processes up to 1600 gpm for clear fresh water and DI/RO water
- 316L stainless steel treatment chamber—electropolished and passivated interior/exterior
- 150 psi maximum operating pressure
- Remote power enclosure with viewing window—polycarbonate or 304 stainless steel
- Monitoring port, sample port, drain port
- Elapsed run time meter
- 2, 3, 4, 6, or 8 inch flange inlet/outlet connections (model dependent)
- Low pressure, high output or amalgam UV lamp with 10,000 hour lamp life—254nm or 185nm
- UV dosage of 30 mJ/cm<sup>2</sup> or higher at rated flow
- Horizontal or vertical mounting (model dependent)
- Custom systems and features are available to meet specific specifications and industry requirements.



### Options

- Monitoring station with UV intensity, 4-20mA linear output, and high heat shutoff
- Monitor 0-100% UV intensity display, 4-20mA linear output
- High heat shutoff
- Sanitary inlet/outlet connections
- Manual quartz sleeve wiper system (model dependent)
- Lamp out alert
- Hands off auto (HOA) switch
- 220V/240V 50-60Hz



# ULTRAVIOLET SYSTEMS



## UVL SERIES ULTRAVIOLET SYSTEMS COMMERCIAL / INDUSTRIAL

Part Number	Inlet/Outlet Connections	Number of Lamps	Total Lamp Watts	UV Dosage mJ/cm <sup>2</sup>	Flow Rate		Chamber Diameter
					Clear, Fresh Water	RO/DI Water	

### UVL High Output Series Ultraviolet Systems (30 inch Short Systems)

UVL1S-2F	2 inch Flange	1	80 W	30	35 gpm	40 gpm	6 inch
UVL1S-2S	2 inch Sanitary						
UVL2S-2F	2 inch Flange	2	160 W	30	70 gpm	84 gpm	6 inch
UVL2S-2S	2 inch Sanitary						
UVL3S-3F	3 inch Flange	3	240 W	30	115 gpm	135 gpm	6 inch
UVL3S-3S	3 inch Sanitary						
UVL4S-3F	3 inch Flange	4	320 W	30	150 gpm	180 gpm	6 inch
UVL4S-3S	3 inch Sanitary						

### UVL High Output Series Ultraviolet Systems (60 inch Long Systems)

UVL4L-4F	4 inch Flange	4	540 W	40	275 gpm	320 gpm	6 inch
UVL4L-4S	4 inch Sanitary						
UVL4L-6F	6 inch Flange	4	540 W	40	400 gpm	480 gpm	8 inch
UVL4L-6S	6 inch Sanitary						
UVL5L-4F	4 inch Flange	5	675 W	40	350 gpm	400 gpm	6 inch
UVL5L-4S	4 inch Sanitary						
UVL5L-6F	6 inch Flange	5	675 W	40	500 gpm	600 gpm	8 inch
UVL5L-6S	6 inch Sanitary						
UVL6L-6F	6 inch Flange	6	810 W	40	600 gpm	720 gpm	8 inch
UVL6L-6S	6 inch Sanitary						

NOTE: Flow rates are based on 95% UVT for clear fresh water at 30 mJ/cm<sup>2</sup> and 99% UVT for RO and DI water at 40 mJ/cm<sup>2</sup>.

# ULTRAVIOLET SYSTEMS



## UVL SERIES ULTRAVIOLET SYSTEMS COMMERCIAL / INDUSTRIAL

Part Number	Inlet/Outlet Connections	Number of Lamps	Total Lamp Watts	UV Dosage mJ/cm <sup>2</sup>	Flow Rate		Chamber Diameter
					Clear, Fresh Water	RO/DI Water	

### UVL Amalgam Series Ultraviolet Systems (30 inch Short Systems)

UVL1SA-2F	2 inch Flange	1	135 W	30	75 gpm	85 gpm	6 inch
UVL1SA-2S	2 inch Sanitary						
UVL2SA-2F	2 inch Flange	2	270 W	30	130 gpm	145 gpm	6 inch
UVL2SA-2S	2 inch Sanitary						
UVL3SA-3F	3 inch Flange	3	405 W	30	225 gpm	225 gpm	6 inch
UVL3SA-3S	3 inch Sanitary						
UVL3SA-4F	4 inch Flange	3	405 W	30	300 gpm	365 gpm	8 inch
UVL3SA-4S	4 inch Sanitary						
UVL4SA-3F	3 inch Flange	4	540 W	40	225 gpm	225 gpm	6 inch
UVL4SA-3S	3 inch Sanitary						
UVL4SA-6F	6 inch Flange	4	540 W	30	450 gpm	525 gpm	8 inch
UVL4SA-6S	6 inch Sanitary						
UVL5SA-6F	6 inch Flange	5	675 W	30	600 gpm	720 gpm	8 inch
UVL5SA-6S	6 inch Sanitary						

### UVL Amalgam Series Ultraviolet Systems (60 inch Long Systems)

UVL4LA-6F	6 inch Flange	4	1280 W	30	750 gpm	900 gpm	8 inch
UVL4LA-6S	6 inch Sanitary						
UVL4LA-8F	8 inch Flange	4	1280 W	30	1200 gpm	1400 gpm	10 inch
UVL4LA-8S	8 inch Sanitary						
UVL5LA-6F	6 inch Flange	5	1600 W	30	875 gpm	1025 gpm	8 inch
UVL5LA-6S	6 inch Sanitary						
UVL5LA-8F	8 inch Flange	5	1600 W	30	1600 gpm	1600 gpm	10 inch
UVL5LA-8S	8 inch Sanitary						
UVL6LA-6F	6 inch Flange	6	1920 W	30	1050 gpm	1050 gpm	8 inch
UVL6LA-6S	6 inch Sanitary						

NOTE: Flow rates are based on 95% UVT for clear fresh water at 30 mJ/cm<sup>2</sup> and 99% UVT for RO and DI water at 40 mJ/cm<sup>2</sup>.